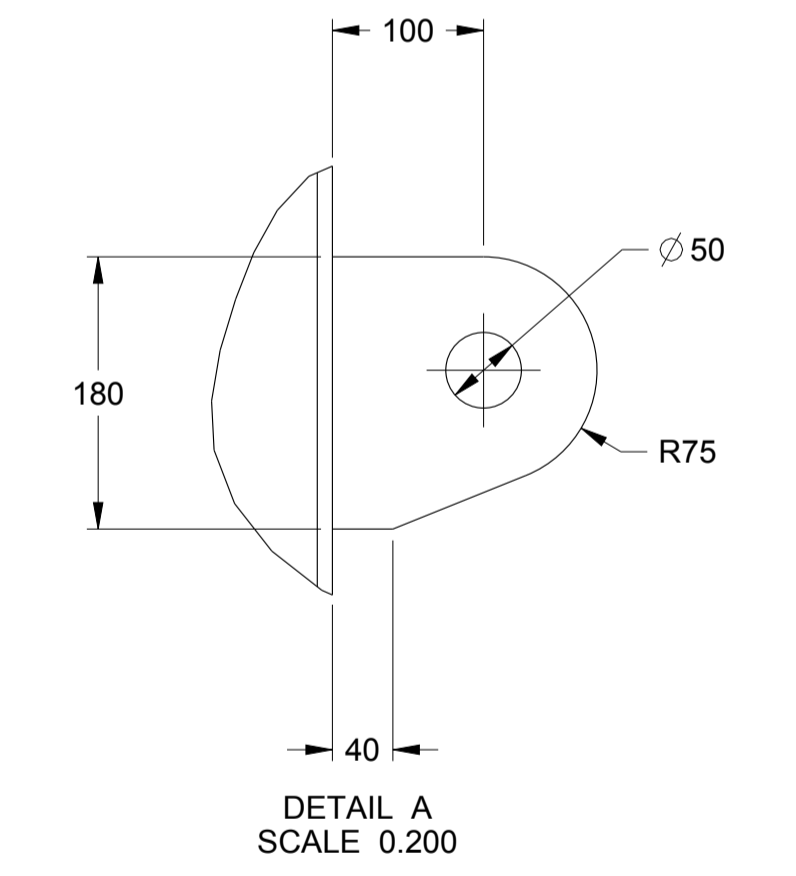
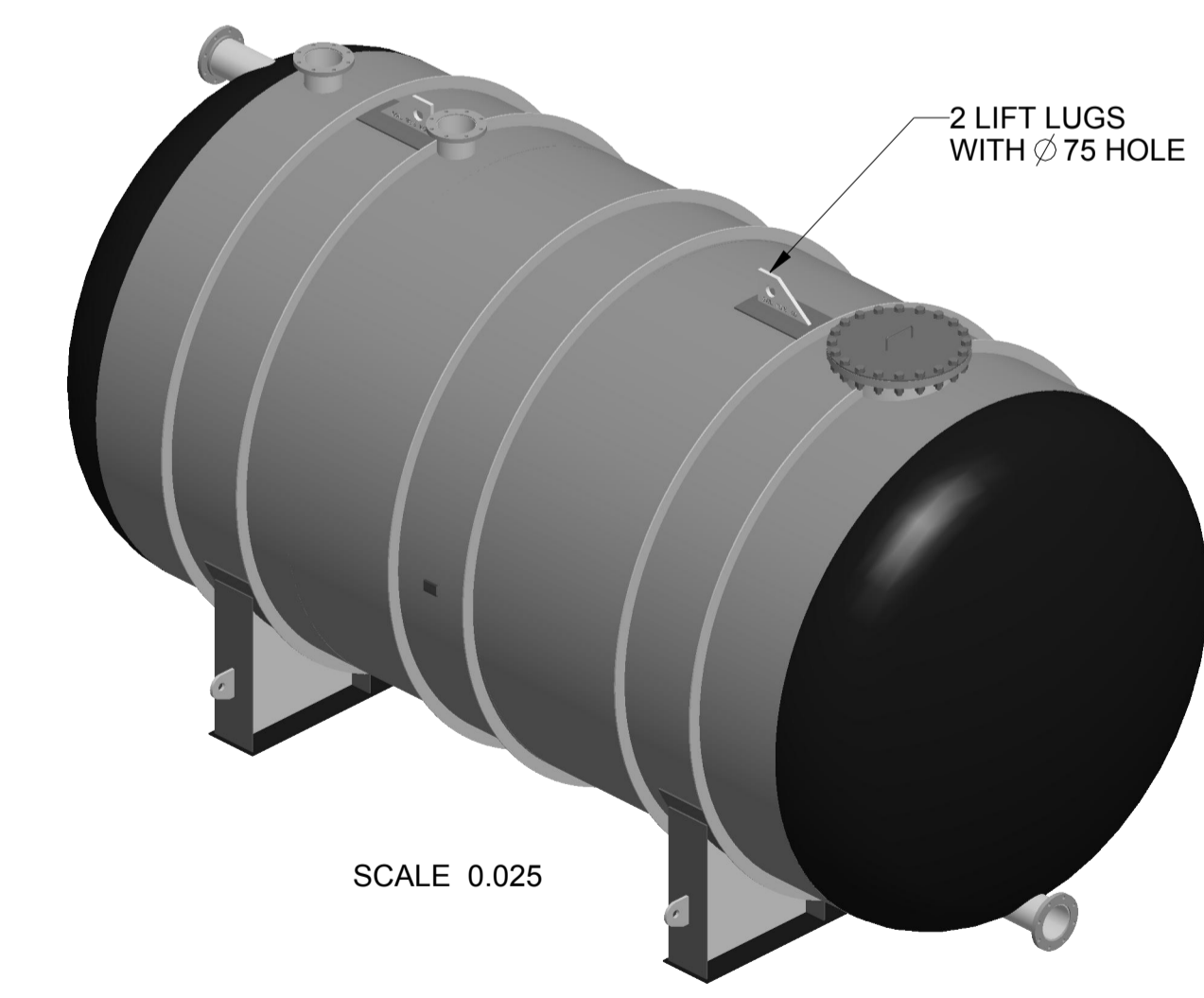
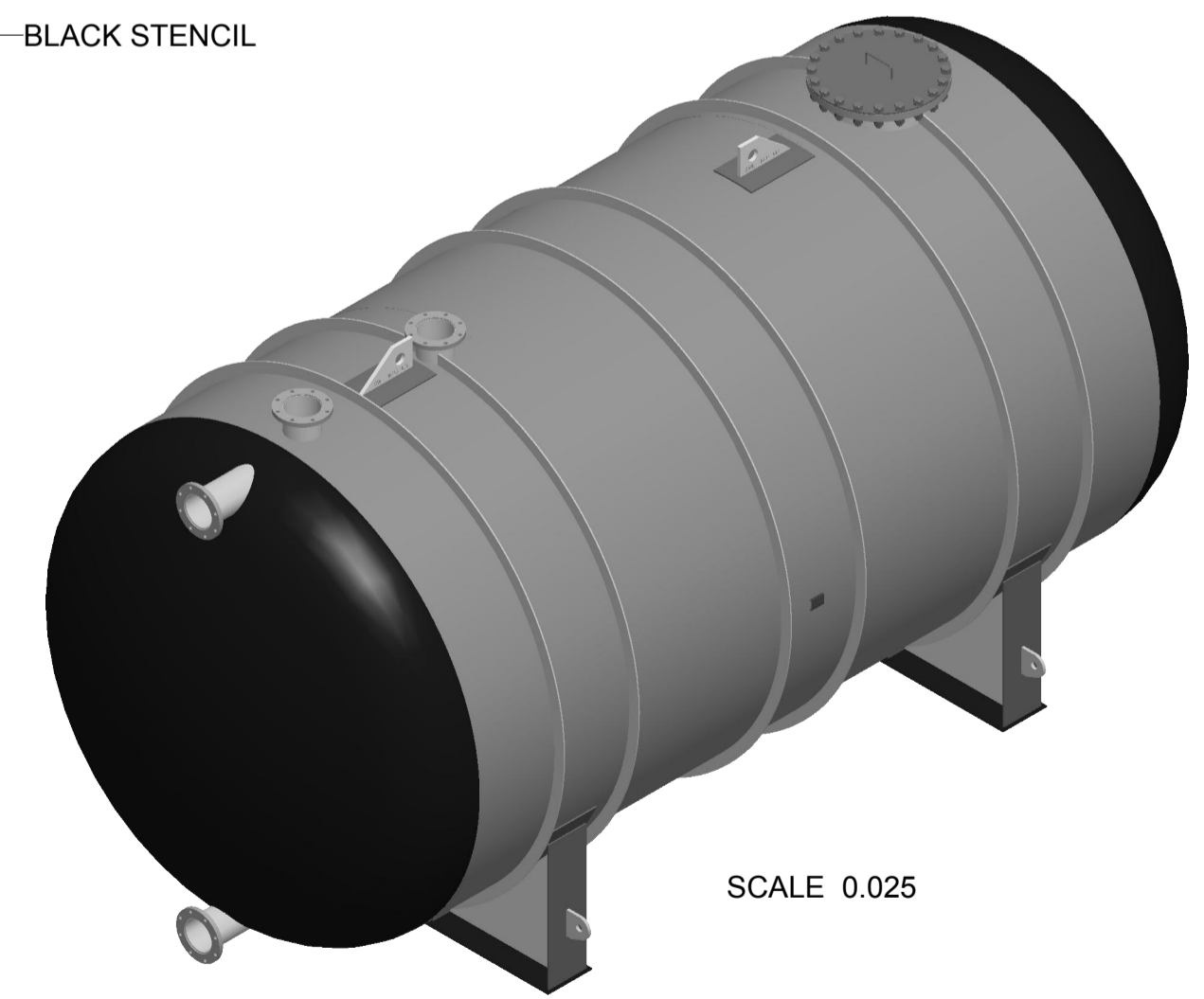
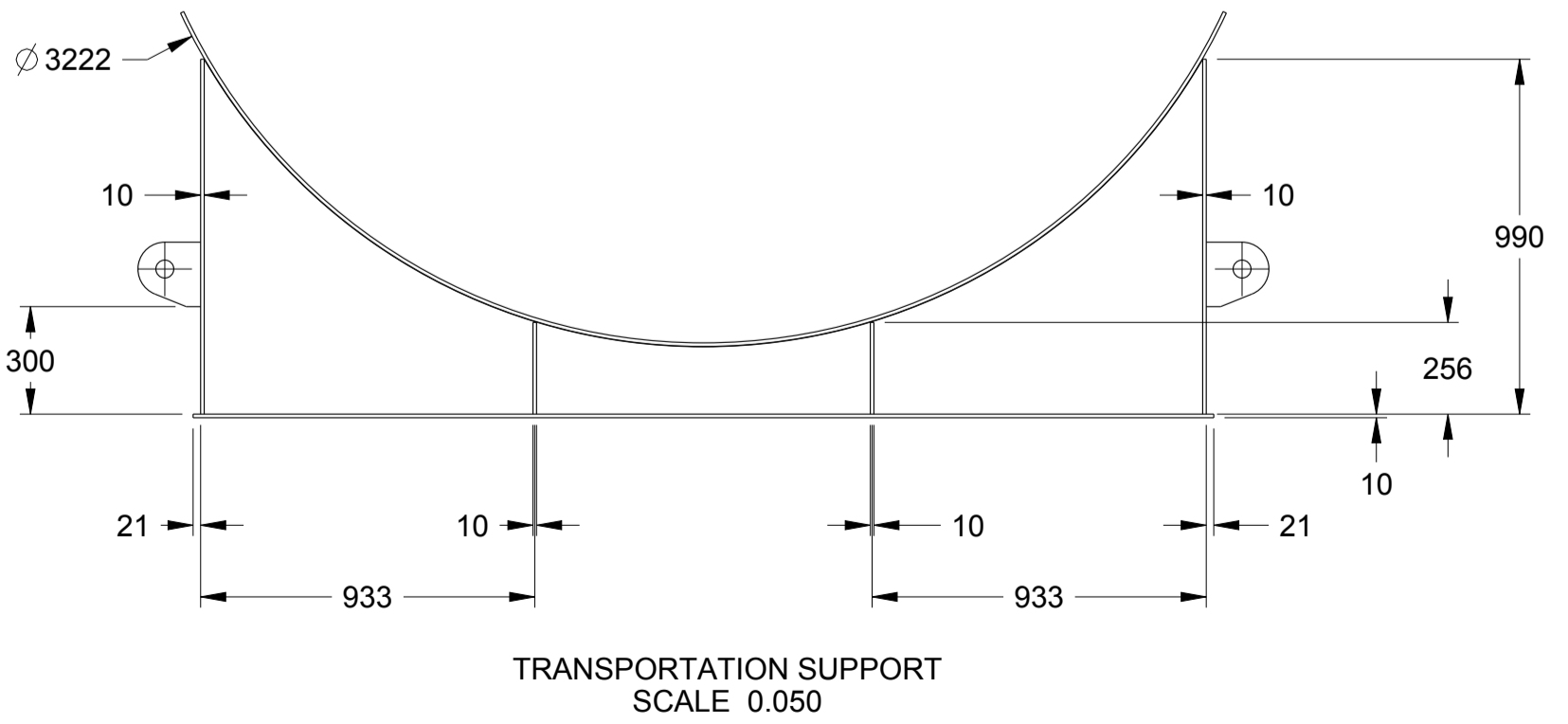
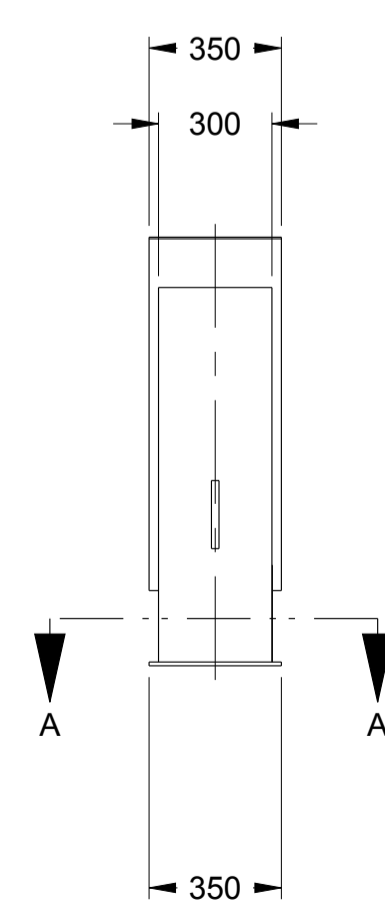
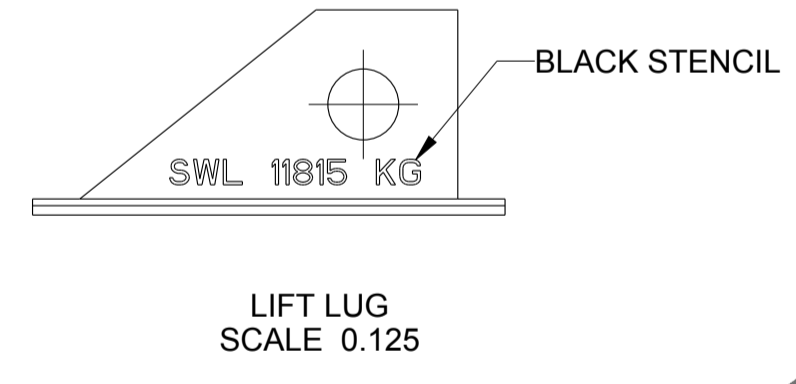
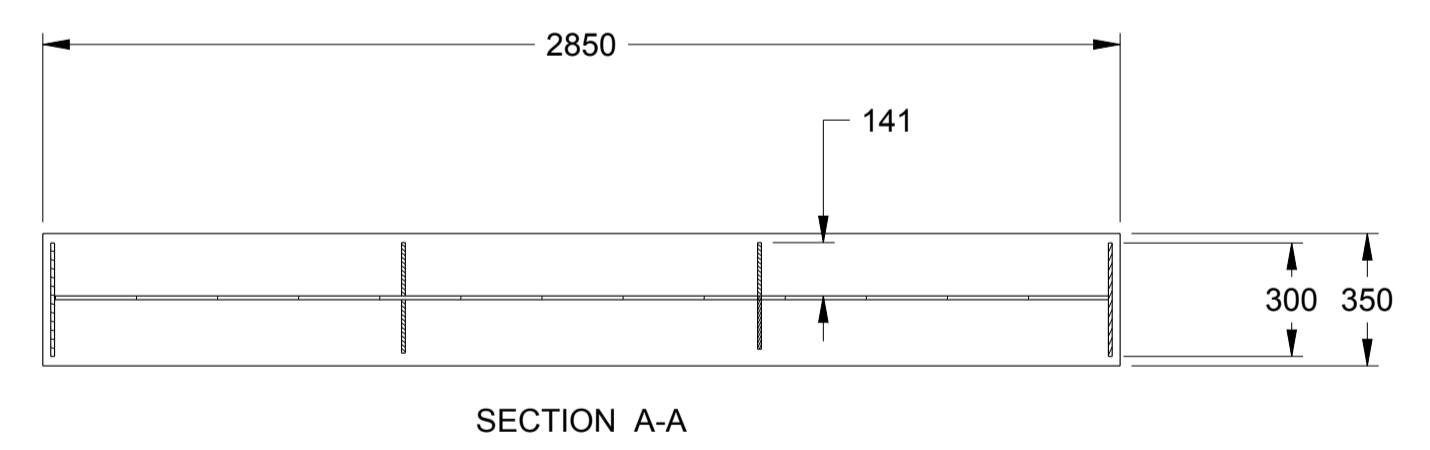
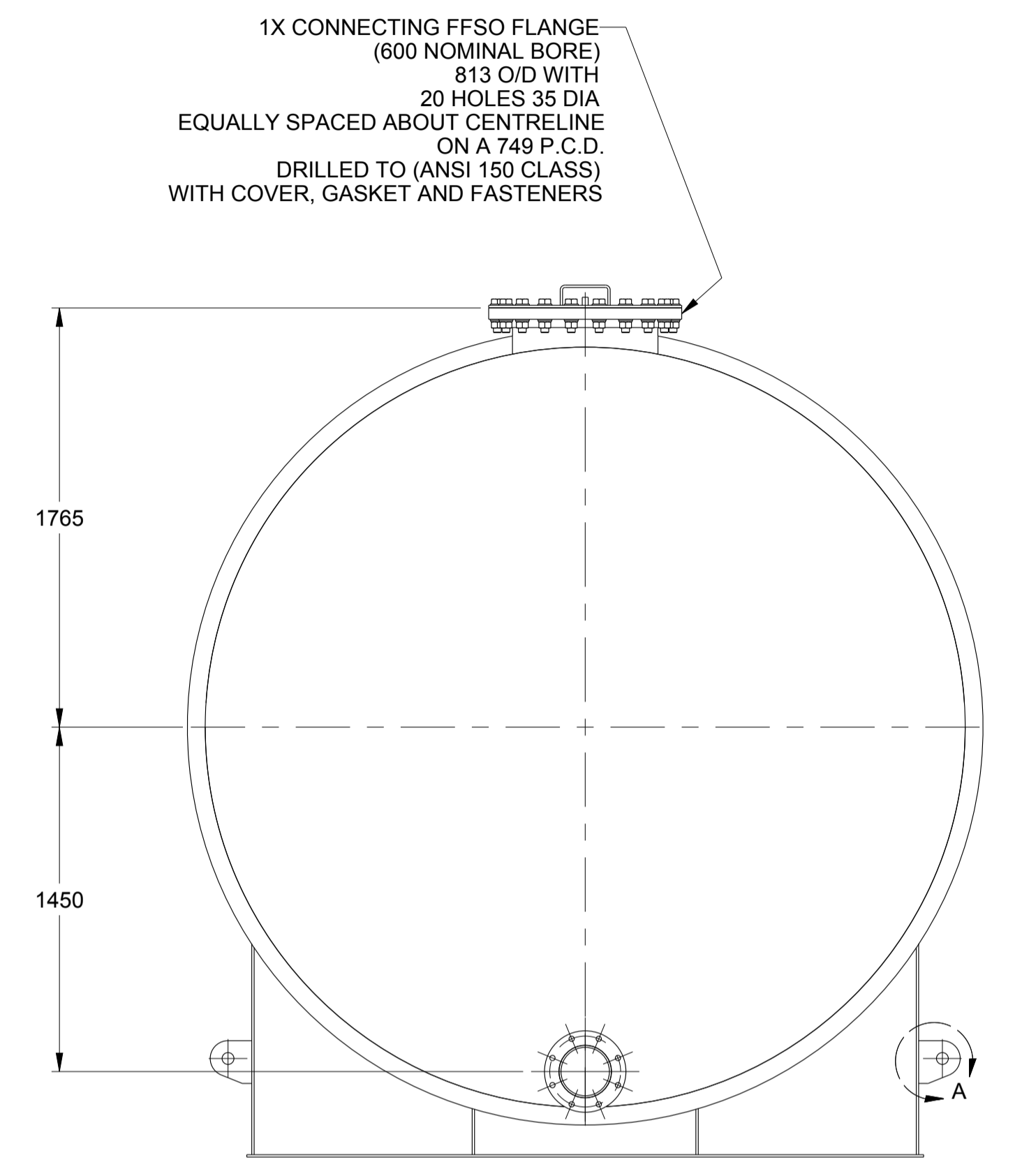
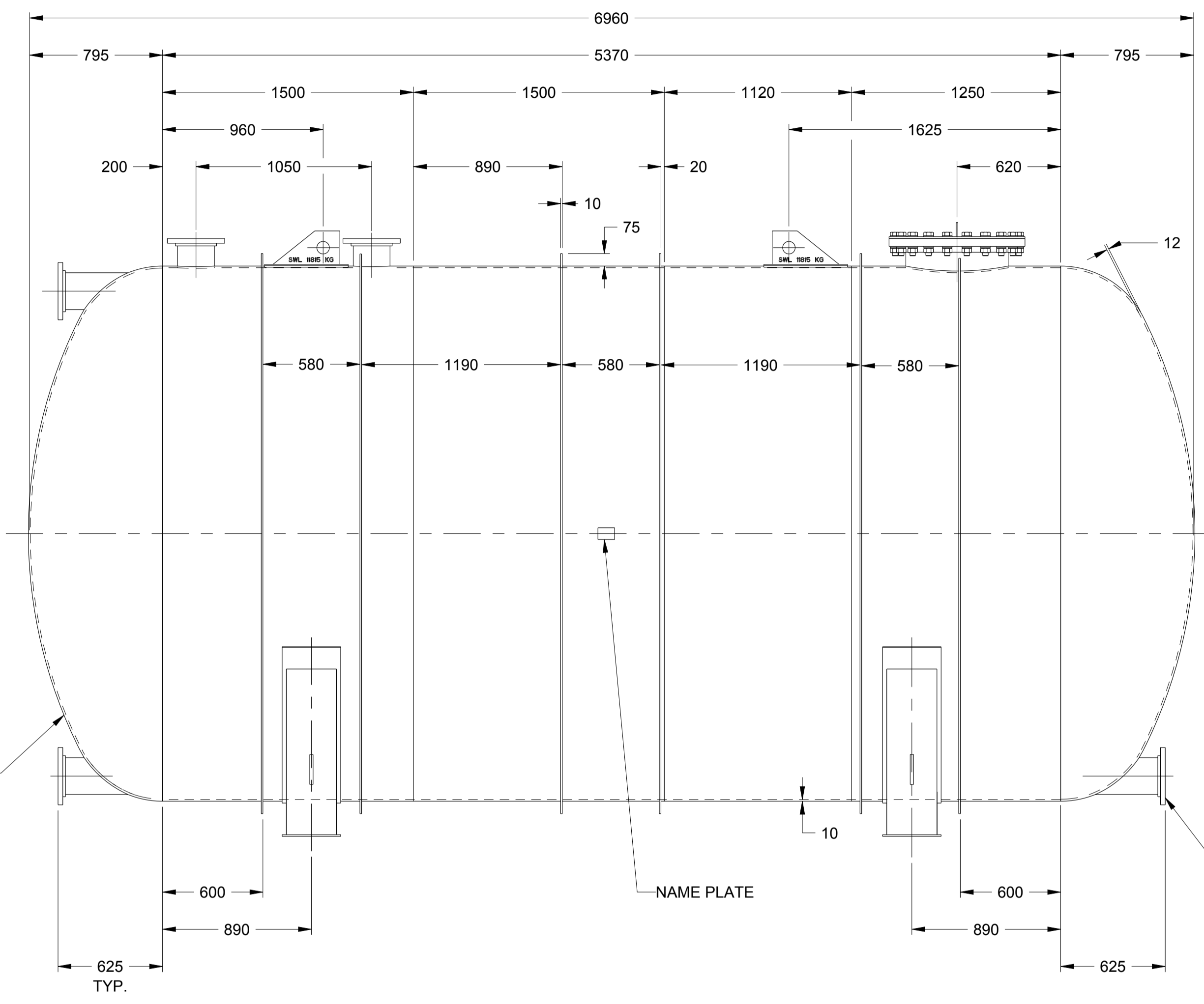
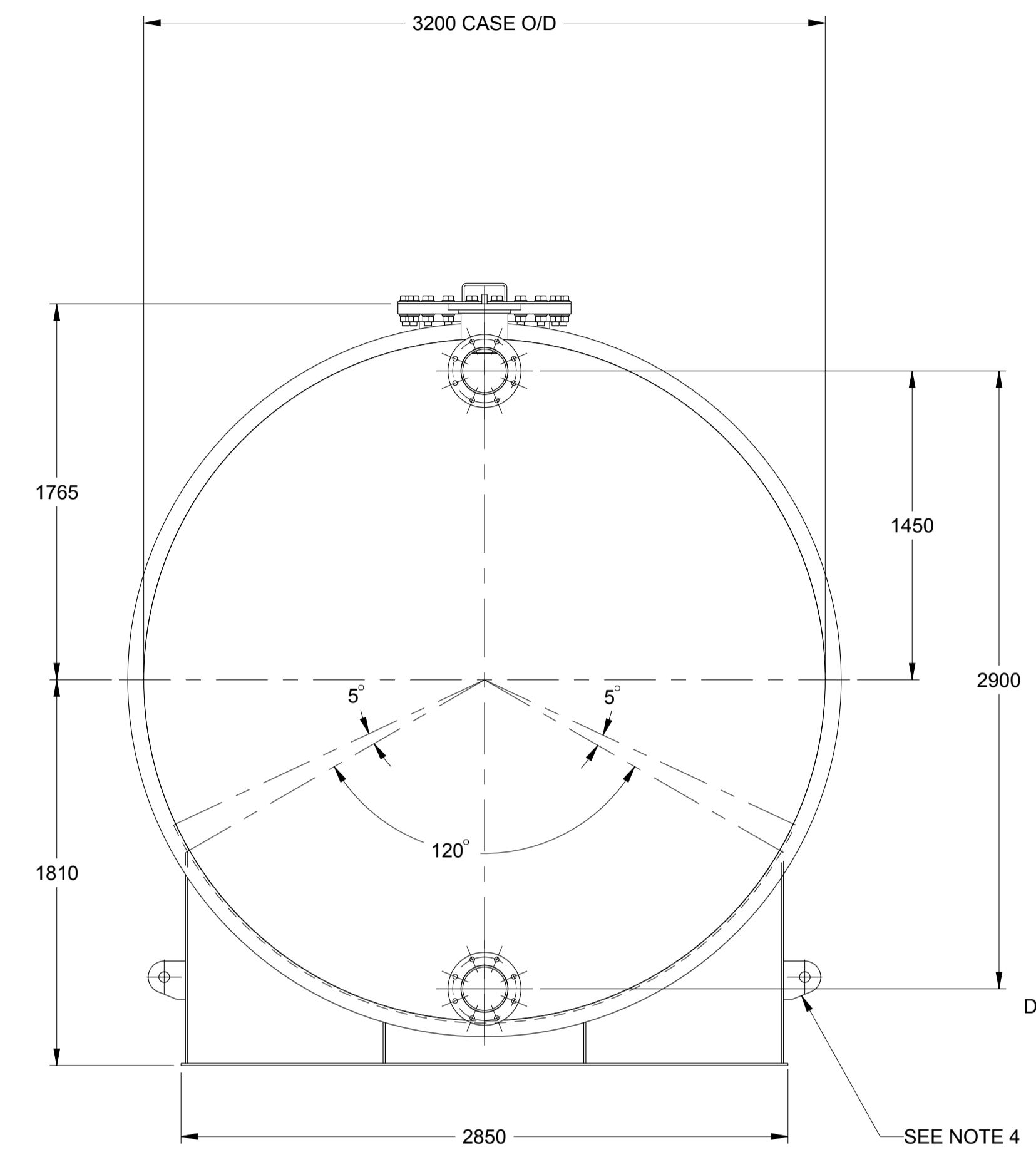


REVISION RECORD			
NO.	CHANGE DESCRIPTION	DRAWN	APP'D
0	ORIGINAL RELEASE (W16114)	AH	HPS
1	NOTE 4 ADDED.	AH	HPS



- NOTE:
- MATERIAL: OIL TANK AND SADDLE PAD IN ST.ST. 304L THE REST OF THE SADDLE STRUCTURE IN MILD STEEL
  - FINISH: TANK: SELF COLOUR SADDLES: PRIMER COAT INTERZINC 22
  - SADDLES FOR TRANSPORTATION PURPOSES ONLY NOT TO BE WELDED TO TANK
  - DO NOT USE LOCKING LUGS ON SADDLE FOR LIFTING THE OIL TANK.
  - TANK WEIGHT: 7030 Kg  
2X SADDLES WEIGHT: 675 Kg  
TOTAL WEIGHT: 7705 Kg

DIMENSIONS CERTIFIED FOR:		TOLERANCES UNLESS STATED - SEE FULL SPEC. 88-0075				Copyright © 2010 UNIVERSAL All Rights Reserved		DESIGN CONTROL:
(mm)	US customary (")	(mm)	US customary (")	(mm)	US customary (")	This Document and the information contained herein constitutes proprietary property, and shall not be copied or used or disclosed without the express written consent of Universal Acoustic & Emission Technologies Inc.		HINCLEY
0-300	0-12	±1.6	±1/16			DESCRIPTION		SCALE: DO NOT SCALE
>300-600	>12-24	±3	±1/8			OIL TANK		
>600-900	>24-36	±5	±3/16			THIRD ANGLE PROJECTION		
>900-6000	>36-240	±6	±1/4			DIMENSIONAL DWG. NO:		
>6000	>240	±12	±1/2			47914-Z		
BY	APPROX. WT. SEE NOTE	MATERIAL SEE NOTE	NAME		DATE	SHEET		REV.
DATE	FINISH SEE NOTE	DRAWN AH		26-MAY-2016		1 OF 1		1
		CHECKED HPS		07-JUN-2016				