



Hans Johansson <byggis.se@gmail.com>

# Encore Framing Structure & Logo Projection & Dimmable LED Lighting

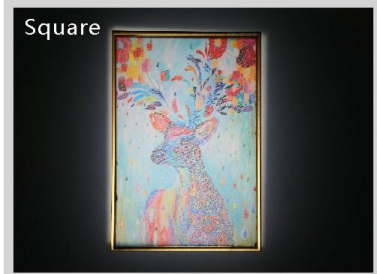
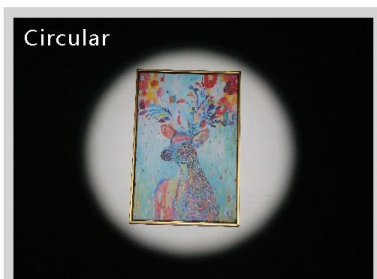
1 meddelande

**Encore Tech** <sales@xiaoyemao.cc>  
Svara: assistant@encore-tech.com  
Till: "byggis.se@gmail.com" <byggis.se@gmail.com>

28 juli 2017 06:27

[Unique Framing Structure & Logo Projection LED Track Lighting](#)

<http://www.encore-tech.com>



## Framing Structure

Though adjustable **framing blades and iris diaphragms**, can showing off both square and circular exhibits to optimum effect. A built-in plate holder creates ideal logo or color projection.

## Logo

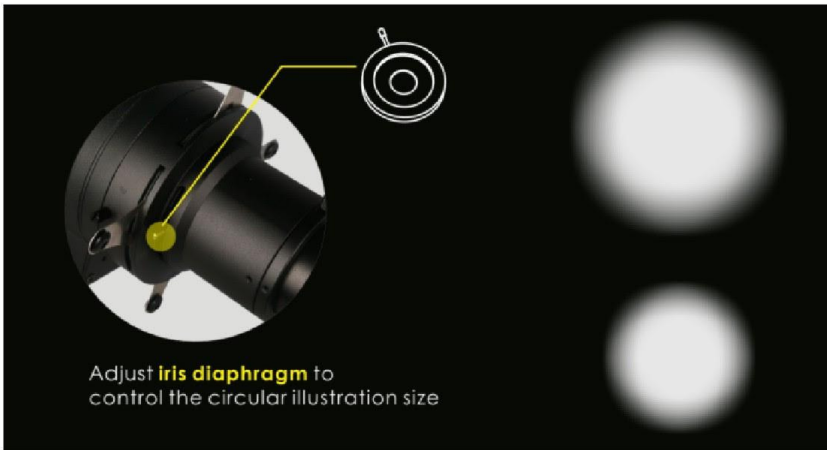
**Logo projection**  
customized logo can be projected at your request.



11 color filters available



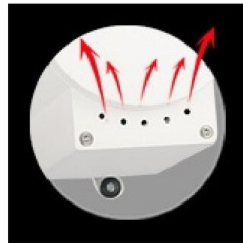
### Beam Angle Adjustable



### Details



Optical Structure



Cooling Hole



Reliable Joiner



### Applications

Art gallery, museum, exhibitions and showroom lighting. Shopping mall, fashion store lighting, etc.



Reply to [assistant@encore-tech.com](mailto:assistant@encore-tech.com)

7/28/2017

Gmail - Encore Framing Structure & Logo Projection & Dimmable LED Lighting

My name is Selena from ENCORE.

Free Feel to contact me if you need more info, I cherish any interactions.

---

*Copyright © 2017, Shenzhen Encore Optoelectronic Technology Co., Ltd. All rights reserved.*  
Website: <http://www.encore-tech.com>

---

If you don't want to receive our Email , [Please unsubscribe here](#)